



Pest risk assessment at the European Food Safety Authority

**Elzbieta Barbara CEGLARSKA
Scientific Coordinator
EFSA Panel on Plant Health**

Why was EFSA established ?

- To ensure high level of food and feed safety and consumer protection
- To restore the consumer confidence after food scares (BSE)
- To avoid that food safety issues are used as non-tariff trade barriers.

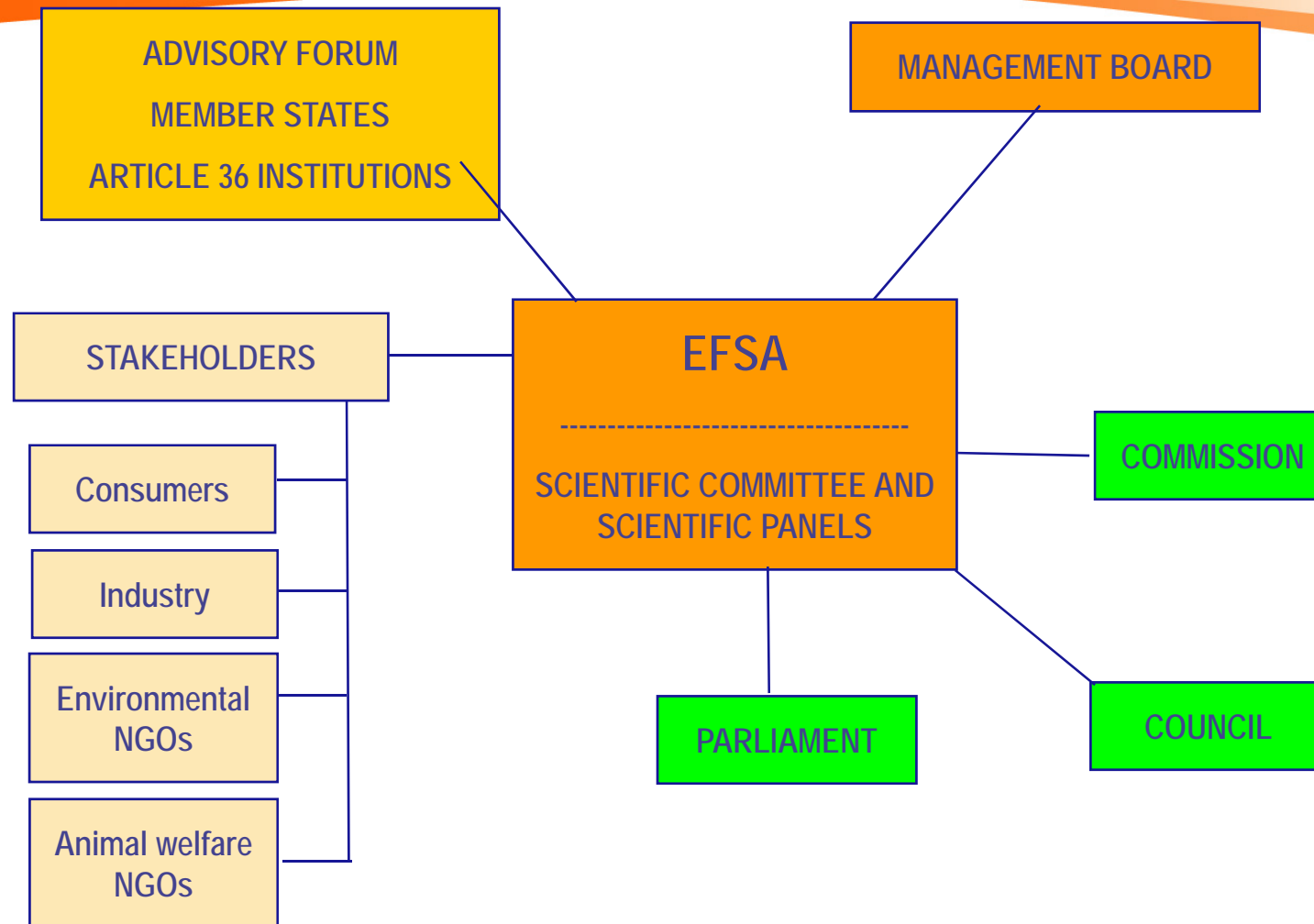
The situation today:

- Risk assessment is clearly separated from risk management;
- EFSA is fully independent;
- Risk communication shared with the Commission;
- High level of openness and transparency;
- Close cooperation with national authorities.

EFSA's Mission and Tasks

[Reg. 178/2002]:

- ... provide **scientific advice and scientific and technical support** ... [Art. 22. 2];
- ... shall provide **scientific opinions** ... [Art. 22.6];
- ... **collect and analyse data** to allow the characterization and monitoring of risks ... [Art. 22.4];
- promote and co-ordinate the **development of uniform risk assessment methodologies** [Art. 23(b)];
- ... commission **scientific studies** ... [Art. 23(d)];
- ... undertake action to **identify emerging risks**... [Art. 23(f)].

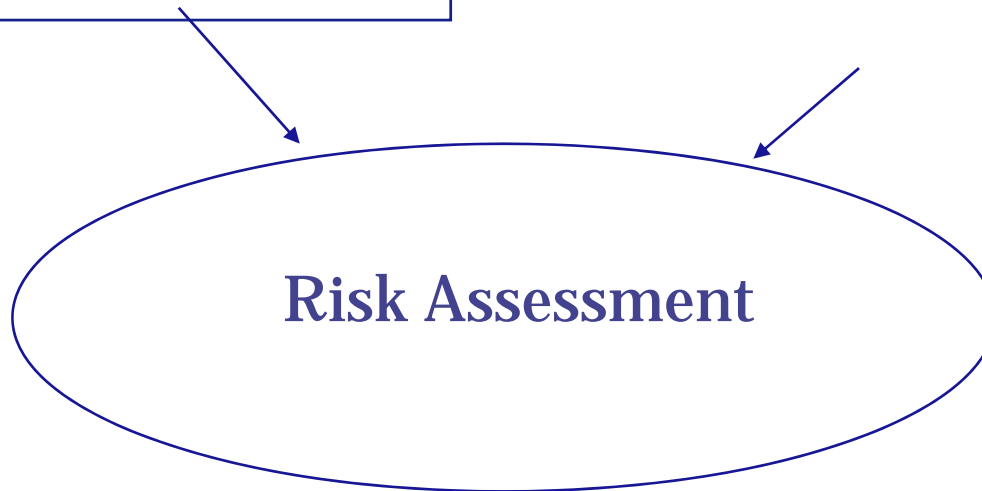


Hazard:

- Identification
- Characterisation

Exposure:

- Assessment
- Calculation



**Scientific
Risk /
Benefit
Assessment**

- Ethical considerations
- Cultural considerations
- Social implications
- Economical assessment

**Risk Management
decisions**

- Food additives, flavourings, processing aids, materials in contact with food (AFC)
- Animal Health and Welfare (AHAW)
- Biological hazards (BIOHAZ)
- Contaminants in the food chain (CONTAM)
- Additives and products in animal feed (FEEDAP)
- Plant Protection Products (PPR)
- Genetically modified organisms (GMO)
- Dietetic products, nutrition and allergies (NDA)
- **Plant Health Panel (PLH)**

- **Comprises the Chairs of all 9 Panels**
- **Additional 6 independent members**
- **Provides guidance to all Panels**
- **Manages projects involving several Panels;**
- **Advises EFSA on emerging issues and priorities for scientific work.**

- **Created 2006 (Dir. 575/2006)**
- **PLH essential factor in food chain**
- **The mandate: to assess risks related to plant health in order to help secure the safety of the food chain**
- **The work:**
 - **Opinions on organisms harmful to plants or plant products posing a threat to crop production and/or biodiversity within the European Community**
 - **Peer-review of pest risk assessments at the European level on request from the EC**
 - **Development of internal guidance documents to ensure high quality, consistency and transparency of the scientific products**

- **Opinions on:**
 - **Organisms harmful to plants or plant products posing a threat to Community plant production, i.e. quarantine organisms listed in or candidates for listing in the Council Directive 2000/29**
 - **Organisms considered harmful by bodies other than the European Commission and recommended for phytosanitary measures**
 - **Organisms considered harmful by the EC Member States and requested to be regulated in the Community plant health directive.**

Opinions on:

- **An evaluation made by the USDA APHIS of asymptomatic citrus fruit as a pathway for the introduction of citrus canker disease (*Xanthomonas axonopodis* pv. *citri*) – published**
- **A PRA made by Spain on *Bactrocera zonata*, a fruit fly listed in the quarantine list of the Community plant health legislation (Council Directive 2000/29/EC) – published**
- **Two PRAs made by the European and Mediterranean Plant Protection Organisation (EPPO) for invasive alien species (IAS) that pose a threat to plant health, environment and biodiversity in the EPPO region, i.e. *Lysichiton americanus* and *Hydrocotyle ranunculoides* – to come soon**
- **Responses made by Lithuania and Poland respectively on a pest risk assessment made by both countries as regards *Ambrosia* spp. – to come soon**
- **On 30 PRAs made by France for DOMs on organisms considered harmful**

- **21 permanent members, ad hocs**
- **Independent individuals**
- **Scientific excellence (knowledge, expertise & skills)**
- **Selected in open call**

- **Plenary meetings**
- **Permanent WGs, ad hoc mtgs**

- **Transparency**
- **Opinions published on-line**

- **Participation in and monitoring of scientific projects (EUPHRESKO, +FP7), conferences and other scientific meetings in Member States**
- **Organization of open scientific EFSA meetings (EFSA Science Colloquium on Plant Health – Parma, December 2007)**
- **Publications**

- **Separation of science and management is not followed in all national food safety agencies**
- **Declarations of interest of experts challenged by critical parties**
- **Internal & external review of EFSA scientific deliverables**
- **Specific situation in PLH: ISPM 11 requires evaluation of economic impact**
- **Data generated at national level → EUROPHYT**
- **EFSA informs the consumer of its findings**
- **Networking with MS (Art. 36; Focal points)**

More information available on:

- **EFSA's general website :**
<http://www.efsa.europa.eu>
- **EFSA highlights (subscribe on-line)**
- **EFSA newsletter**